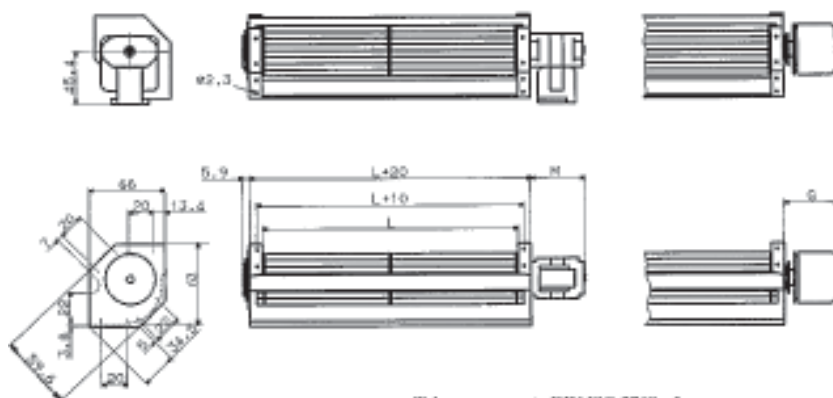


Tvärströmsfläktar TA Ø 40 till 133 mm



Teknisk data och mått för TA 40

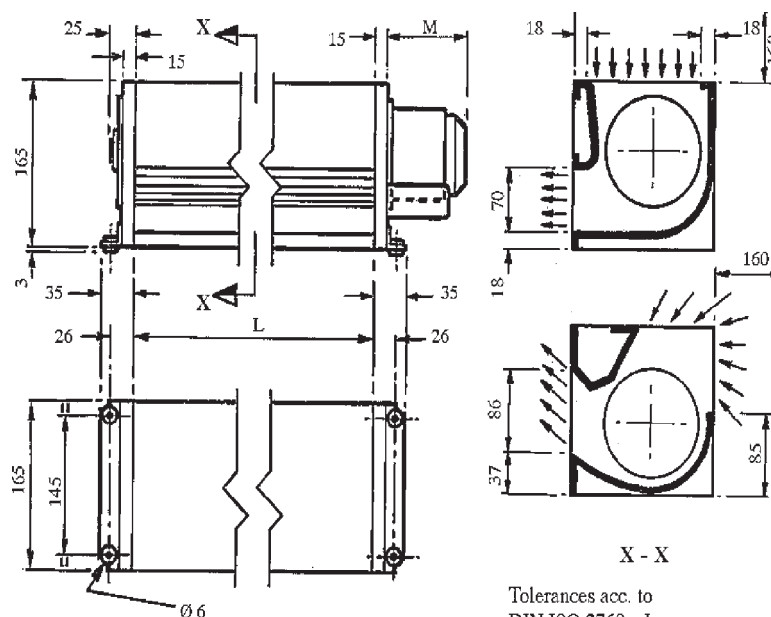
| Storlek | Max.flöde m ³ /h | Max.tryck Pa | Mått mm | |
|------------------|--------------------------------|-----------------|---------|----|
| | | | L | M |
| TA.. 40/95/M 30 | 56,5 | 17 | 95 | 62 |
| TA.. 40/189/M 30 | 96,5 | 16 | 189 | 62 |
| TA.. 40/266/M 30 | 100,5 | 15 | 266 | 62 |
| TA.. 40/300/M 30 | 124,5 | 13,5 | 300 | 62 |



Tolerances acc. to DIN ISO 2768-cL

Teknisk data och mått för TA 100

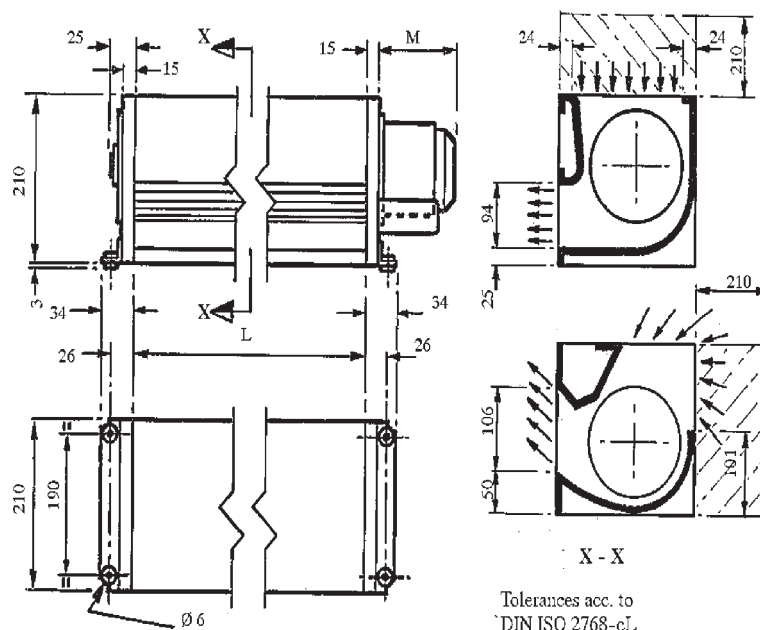
| Storlek | Max.flöde m ³ /h | Max.tryck Pa | Mått mm | |
|----------------------|--------------------------------|-----------------|---------|-----|
| | | | L | M |
| TA.. 100/200/4 M 35 | 382 | 44 | 200 | 90 |
| TA.. 100/400/4 M 35 | 749 | 47 | 400 | 90 |
| TA.. 100/600/4 M 35 | 1080 | 49 | 600 | 90 |
| TA.. 100/830/4 M 35 | 1390 | 45 | 830 | 90 |
| TA.. 100/830/4 M 50 | 1584 | 49 | 830 | 103 |
| TA.. 100/1030/4 M 35 | 1512 | 42 | 1030 | 90 |
| TA.. 100/1030/4 M 50 | 1642 | 44 | 1030 | 103 |
| TA.. 100/1230/4 M 50 | 1832 | 44 | 1230 | 103 |



Tolerances acc. to
DIN ISO 2768-cL

Teknisk data och mått för TA 133

| Storlek | Max.flöde m ³ /h | Max.tryck Pa | Mått mm | |
|----------------------|--------------------------------|-----------------|---------|-----|
| | | | L | M |
| TA.. 133/200/4 M 35 | 583 | 112 | 200 | 90 |
| TA.. 133/400/4 M 50 | 1253 | 112 | 400 | 103 |
| TA.. 133/600/4 M 50 | 1404 | 101 | 600 | 103 |
| TA.. 133/830/4 M 50 | 1555 | 90 | 830 | 103 |
| TA.. 133/1030/4 M 80 | 1584 | 103 | 1030 | 141 |
| TA.. 133/1230/4 M 80 | 1656 | 90 | 1230 | 141 |

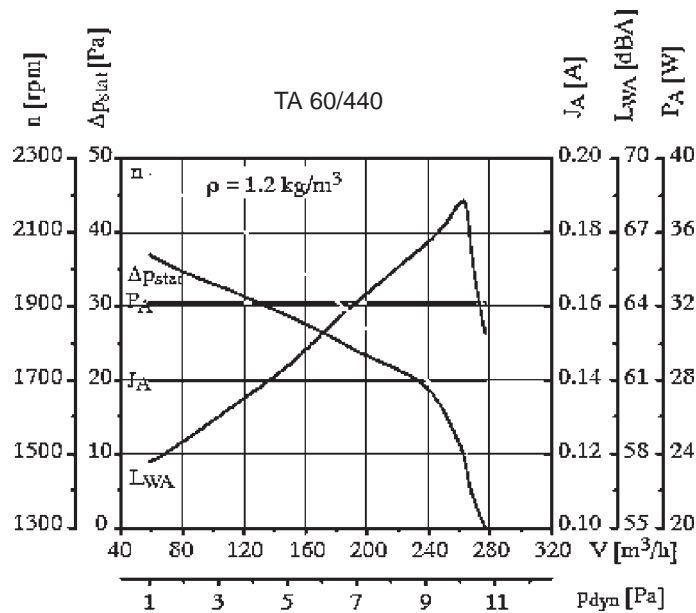
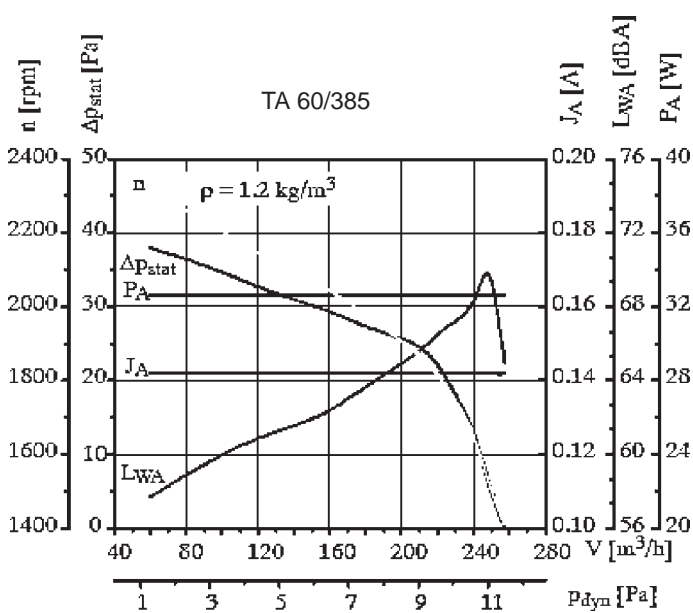
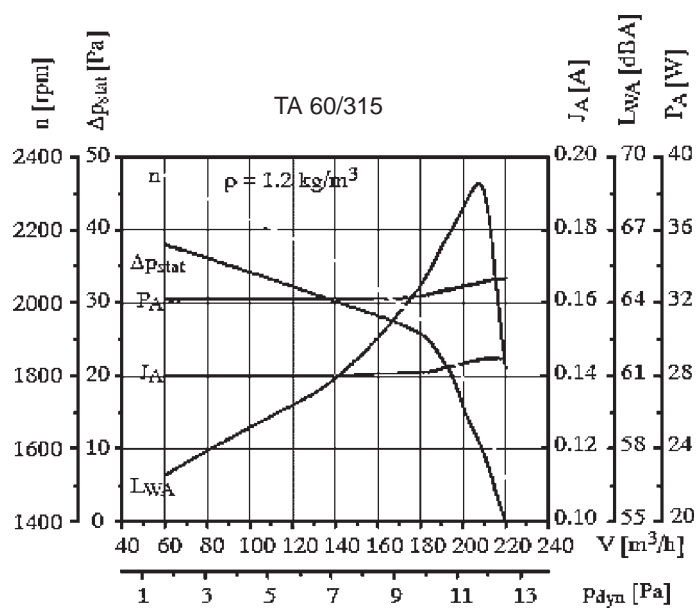
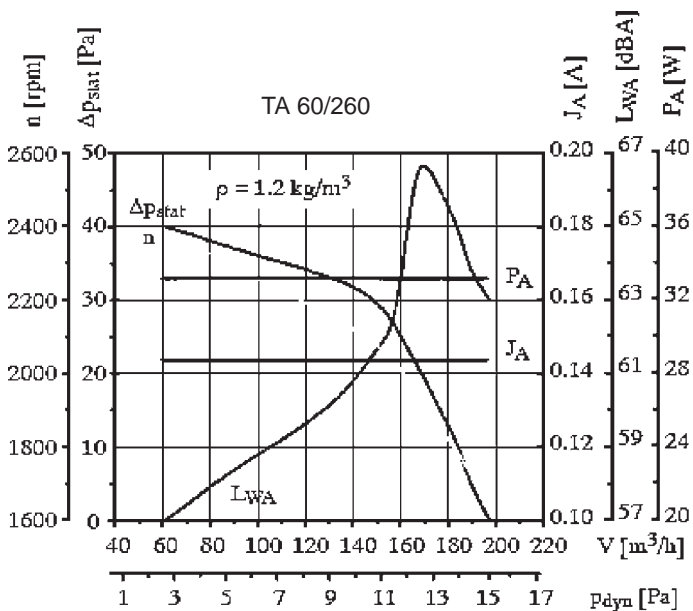
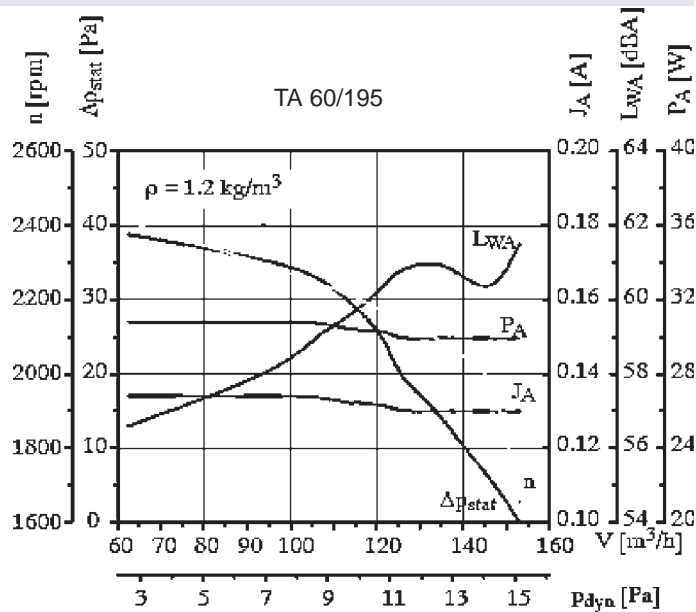
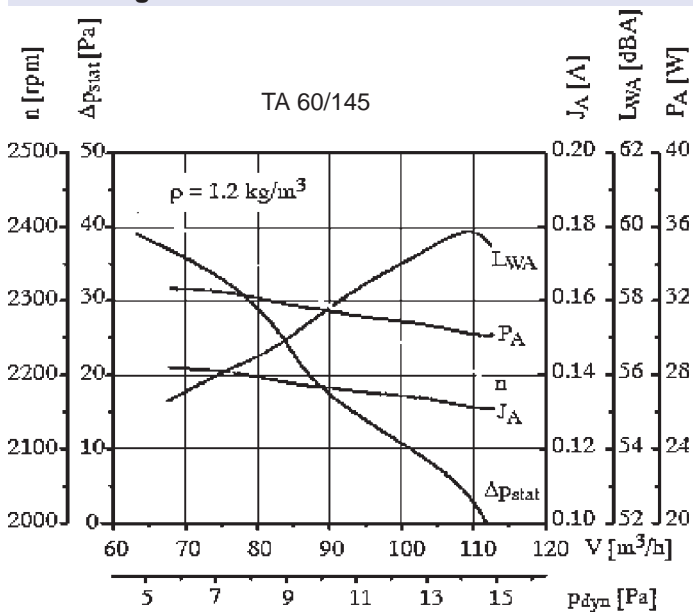


Tolerances acc. to
DIN ISO 2768-cL

Tvärströmsfläktar TA Ø 40 till 133 mm



Flödesdiagram



Tvärströmsfläktar TA Ø 40 till 133 mm

